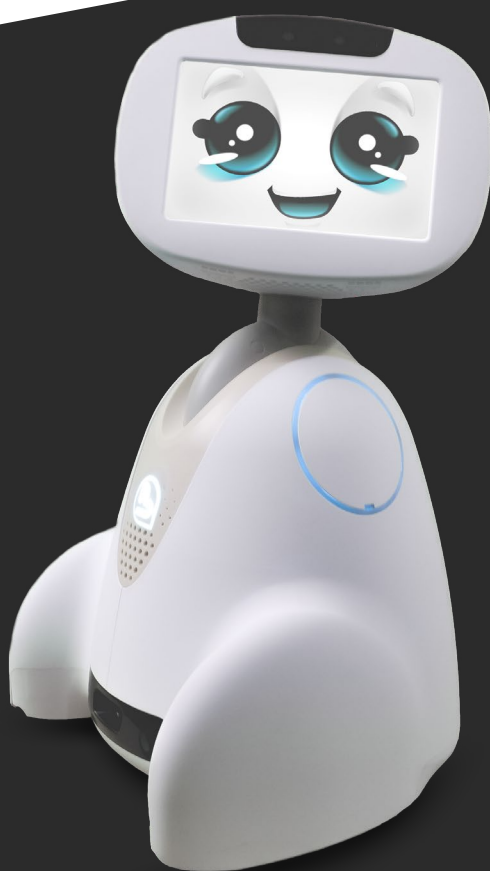
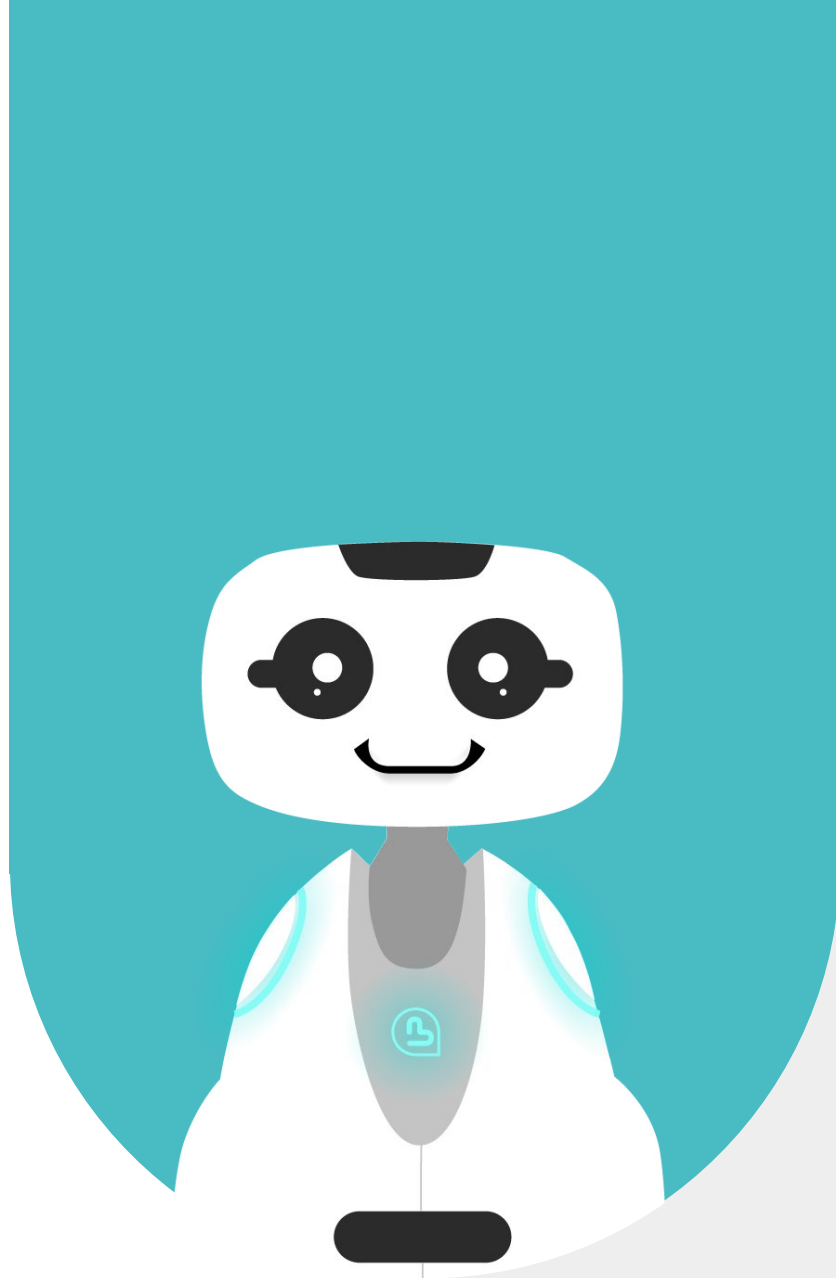


FLYER HOLDER & FLAG ASSEMBLY

Assembly Instructions EN V1.0



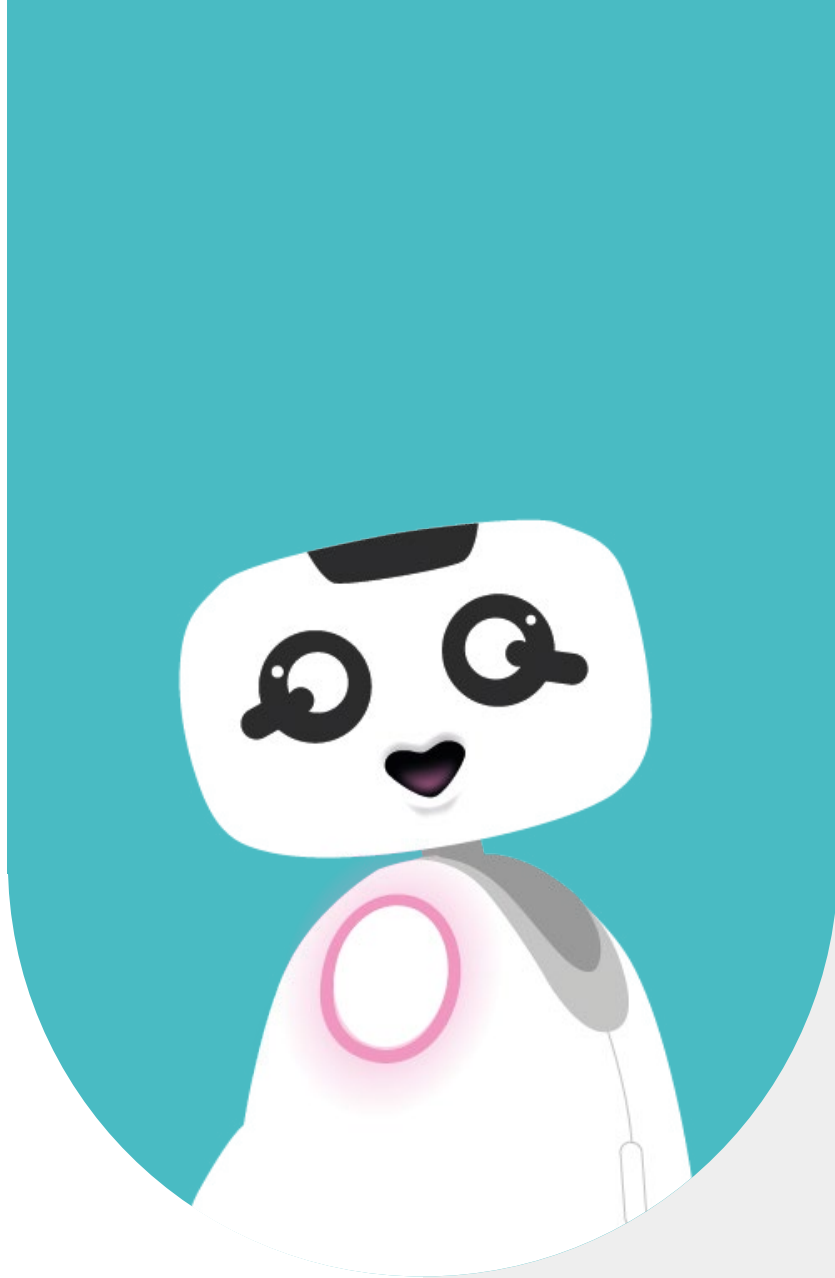
Buddy[®]
The Emotional Robot



1 - SUMMARY

1 - SUMMARY	2
2 - CONTENT	4
3 - ASSEMBLING THE FLAG	6
3.1 - ASSEMBLING THE FLAG	7
3.2 - MOUNTING ON THE FLYER HOLDER	8
4 - INSTALLATION OF THE FLYER HOLDER	9
4.1 - REMOVE THE RIGHT SHOULDER COVER	10
4.2 - CLIP YOUR FLYER HOLDER	10
6 - CONTACT INFORMATION	12
6.1 - CONTACT INFORMATION	13





2 - CONTENT

You must have received 2 packages, in one you have all the elements necessary for assembling your flag, in the other your flyer holder.

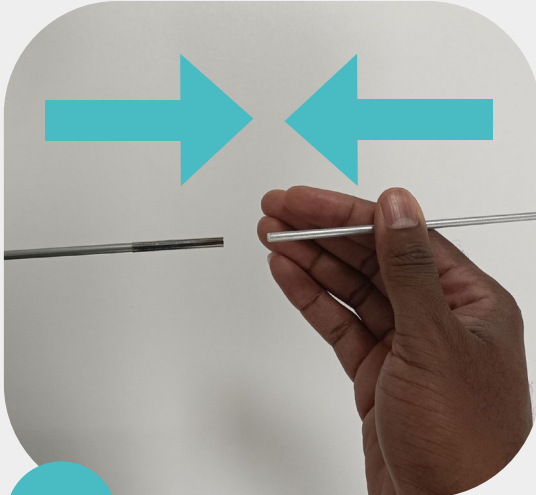




3 - ASSEMBLING THE FLAG

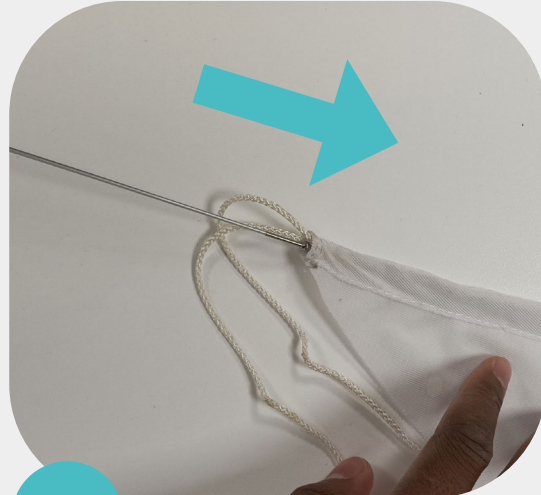
3.1 - ASSEMBLING THE FLAG

Assemble the 2 parts of the mast



1

Slide the mast into the flag



2

Push the mast well to the end of the flag



3

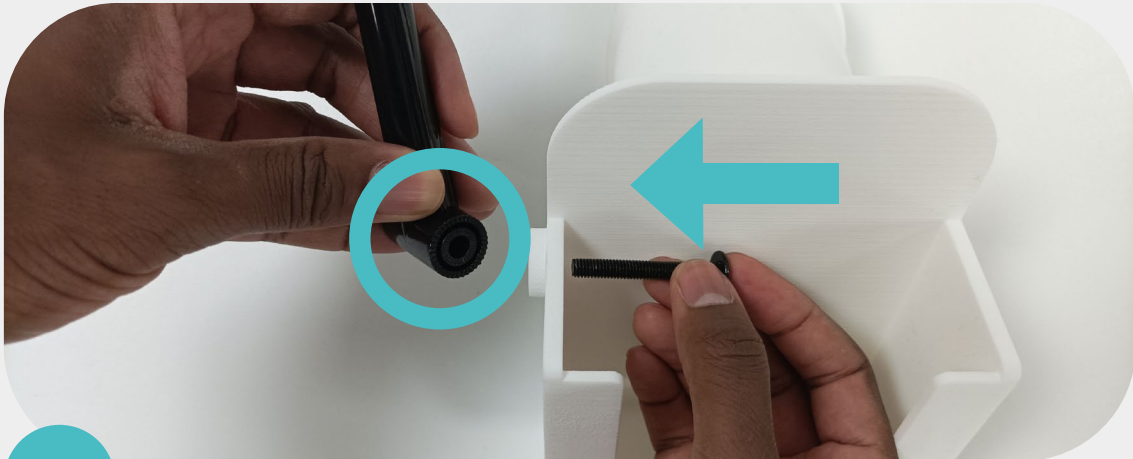
Pull and tie a double knot at the base of the mast



4

3.2 - MOUNTING ON THE FLYER HOLDER

Insert the screw into the part of the flyer holder provided for this purpose. Position the mast on the side where the striae are visible.



1

Once fitted, insert the nut to secure the assembly.

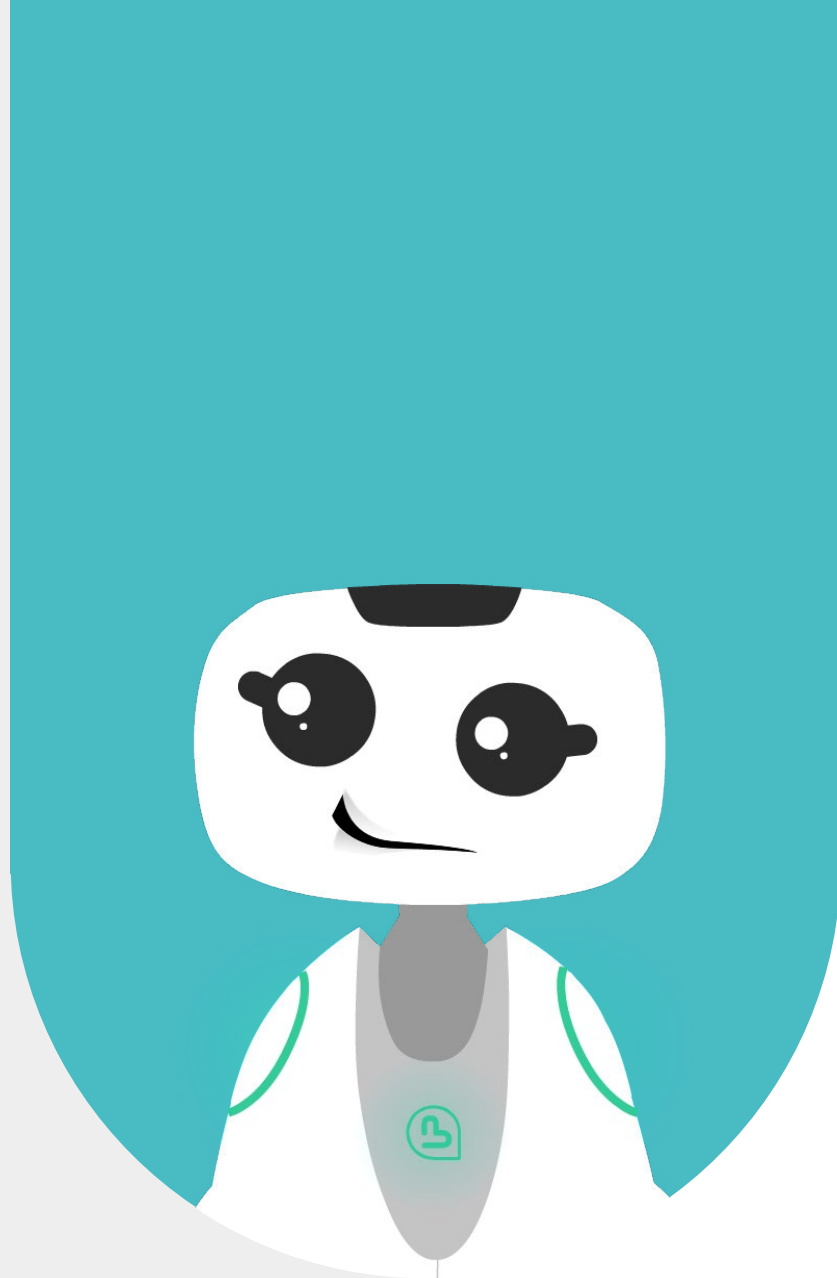
Tighten the nut enough to keep the flag upright



2



3

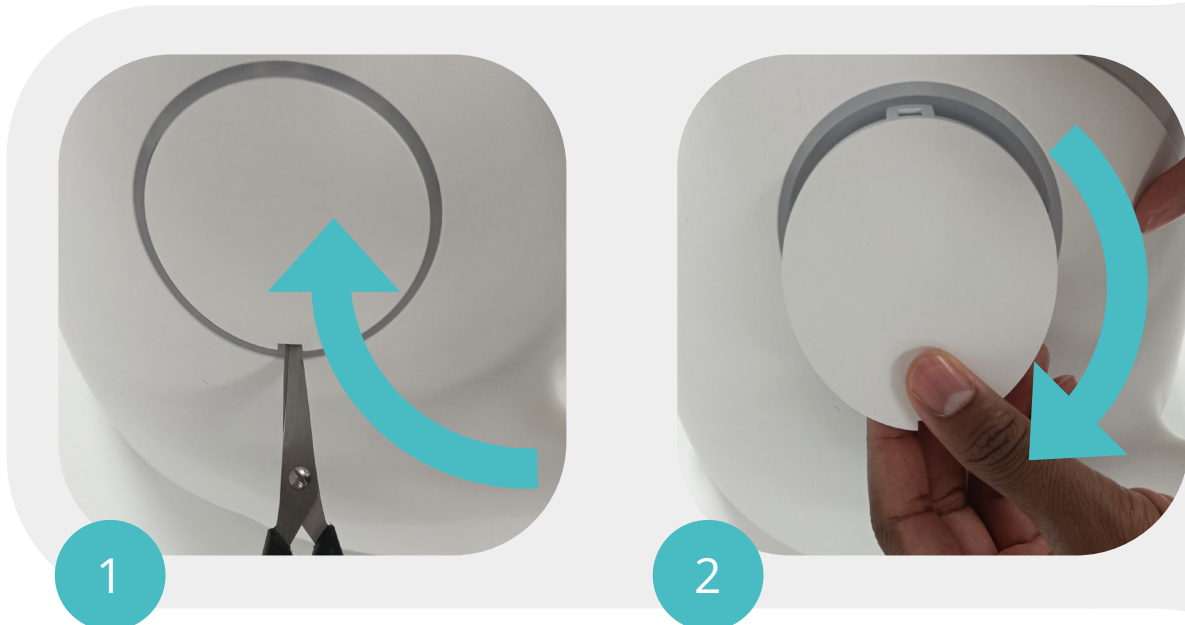


4 - INSTALLATION OF THE FLYER HOLDER

4.1 - REMOVE THE RIGHT SHOULDER COVER

Use a pair of scissors or a flat screwdriver to unclip the shoulder cover.

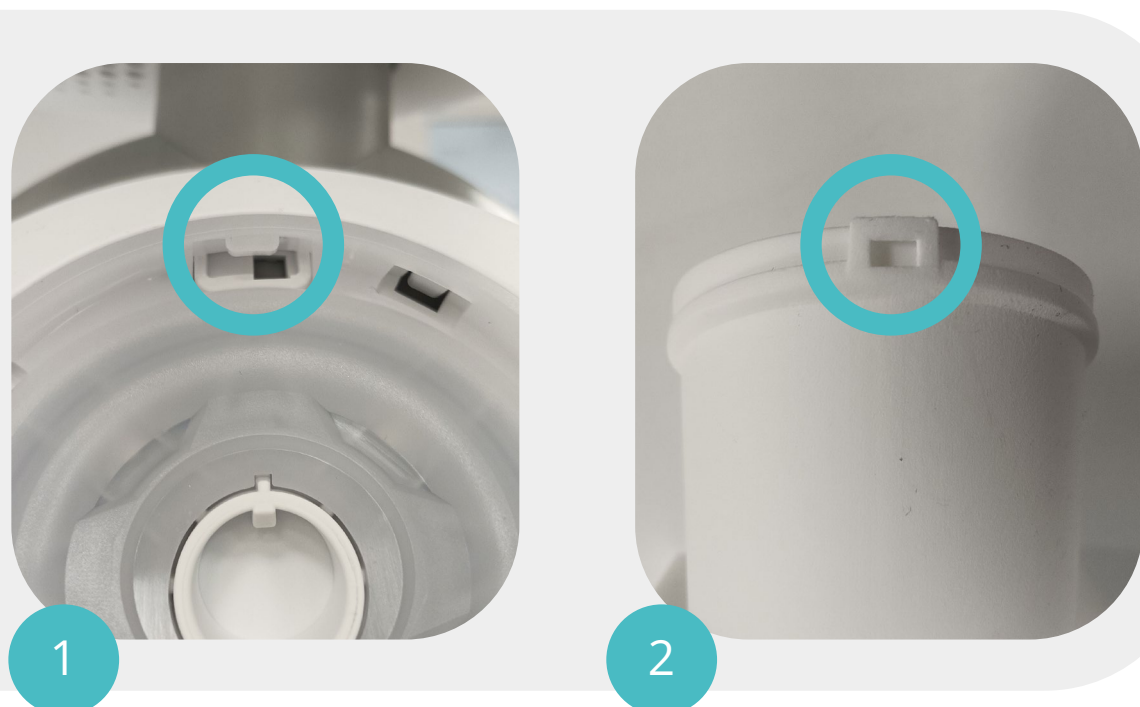
Make a slight lever movement. The cover unclips and you just have to remove it by hand.



4.2 - CLIP YOUR FLYER HOLDER

In the shoulder housing at the top, you can see the clip that comes out.

On your flyer holder, you can observe the female part of the device.



Place the flyer holder from the top, checking that the 2 parts of the clip are properly engaged.

Push down until the assembly snaps into place, keeping the upper part assembled.



Congratulations! You have successfully assembled your flyer holder and your flag.

If you encounter a problem during the assembly, or if you have ideas for improvement, do not hesitate to let us know. Go to the contact section.





6 - CONTACT



6.1 - CONTACT INFORMATION

If you wish to contact us for more information, please refer to the following addresses.

SUPPORT
service-client@buddytherobot.com

GENERAL INFORMATION
info@bluefrogrobotics.com