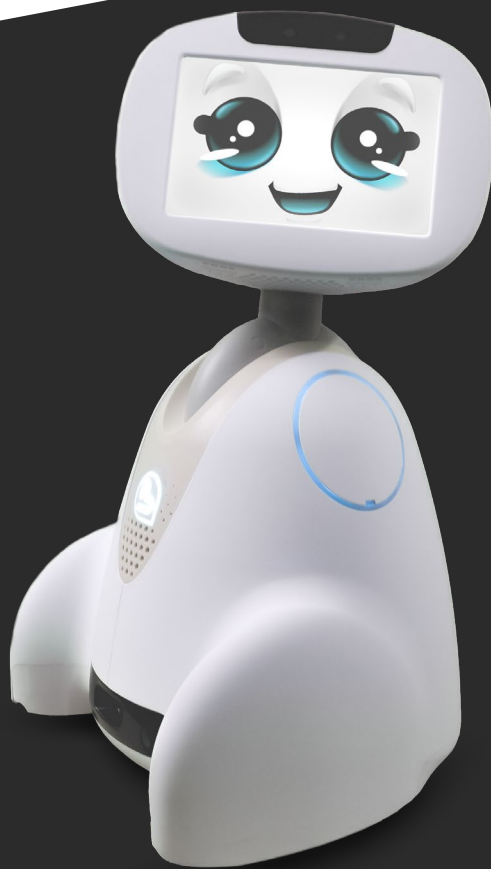


DOCKING STATION

User Guide EN V2.0

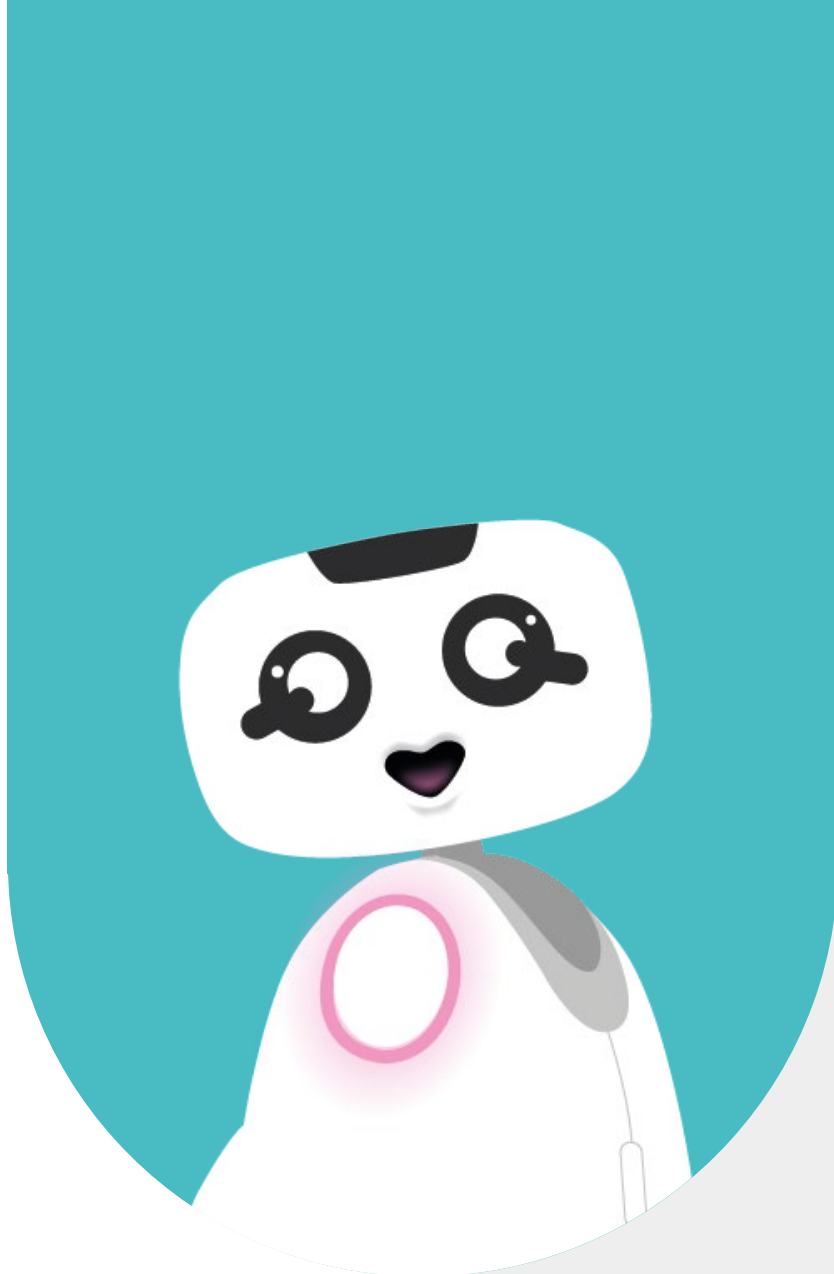


Buddy.
The Emotional Robot



1 - SUMMARY

1 - SUMMARY	2
2 - CONTENT	4
2.1 - ITEMS SUPPLIED WITH THE CHARGING STATION PACKAGE	5
3 - MOUNTING THE BASE ON THE WALL	6
3.1 - ADHESIVE BONDING	7
3.2 - SCREW MOUNTING	7
4 - STATION CONNECTION	8
5 - BUDDY MENU CONFIGURATION	10
6 - RELOADING PROCESS	12
6.1 - TRIGGERING THE RELOADING PROCESS	13
6.2 - EXIT FROM RECHARGING PROCESS	13
6.2 - WARNING	13
7 - DOCK THE ROBOT FROM MYBUDDYAPP	14
7.1 - ON TELEBUDDY	15
7.2 - ON MYBUDDYAPP	16
7 - CONTACT	18
7.1 - CONTACT INFORMATION	19



2 - CONTENT

2.1 - ITEMS SUPPLIED WITH THE CHARGING STATION PACKAGE

Packaging

v

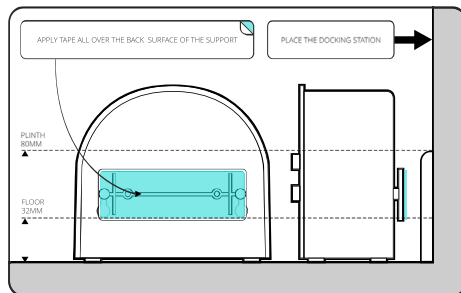


The charging station

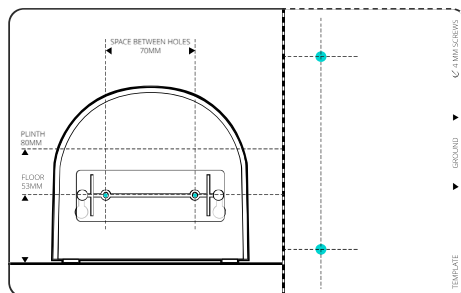
v



FIXATION WITH DOUBLE SIDED ADHESIVE TAPE



FIXATION WITH 2 X 4MM SCREWS + DOWELS INTO THE PLINTH OR THE WALL

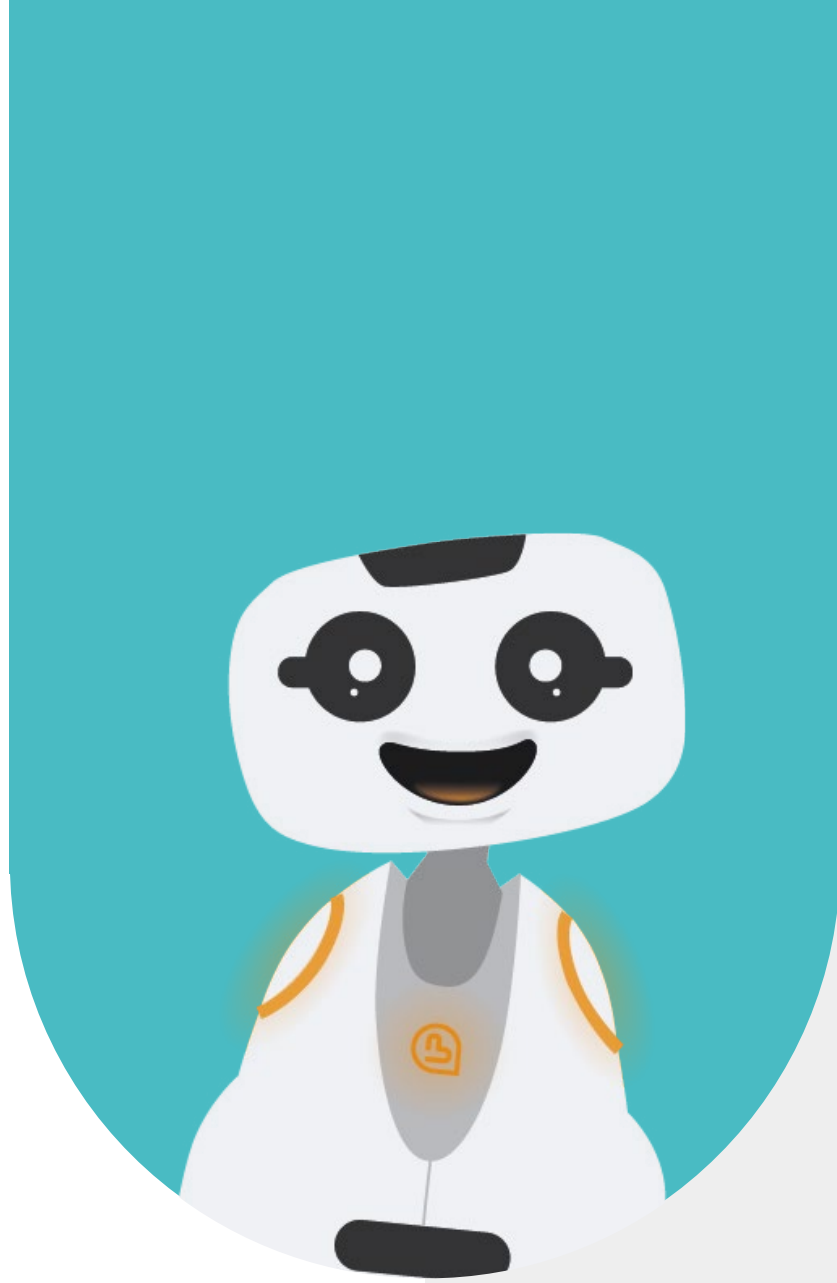


< Fastener installation guide and 1:1 scale template

2 Fixing screws and plate a wall-mount

v

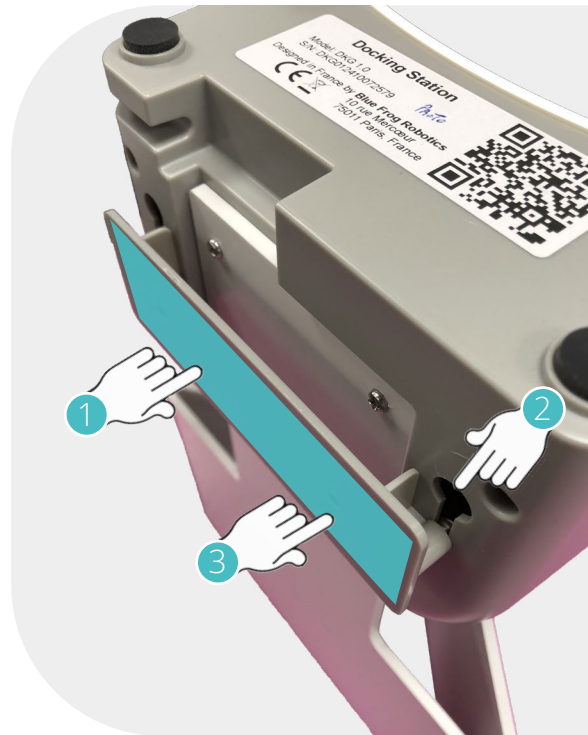




3 - MOUNTING THE BASE ON THE WALL

3.1 - ADHESIVE BONDING

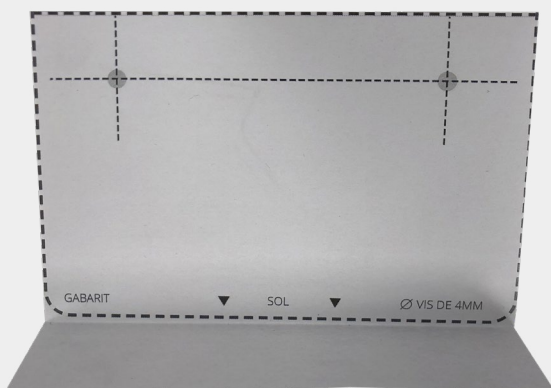
- 1 - Apply double-sided tape
- 2 - Hang base from attachment to charging station
- 3 - Remove the double-sided tape protection and press the assembly firmly against the wall

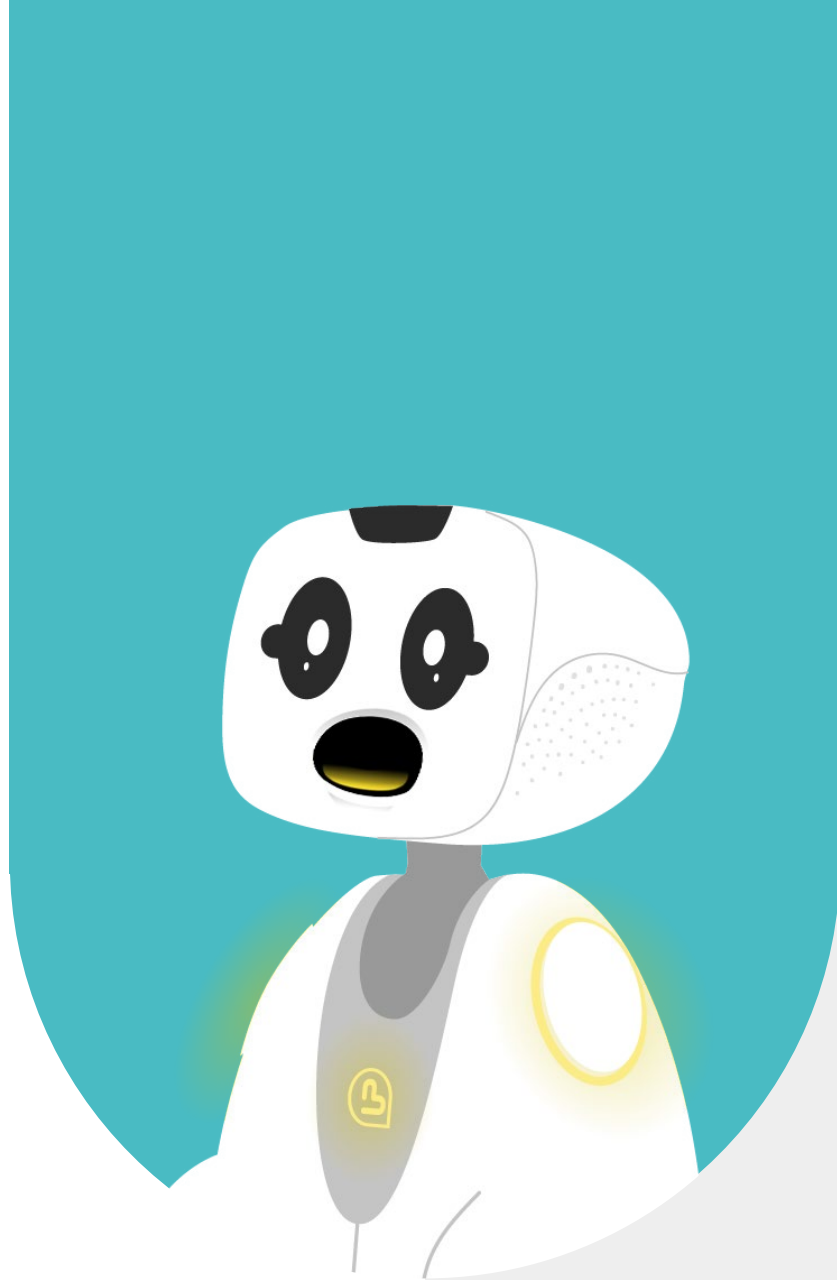


3.2 - SCREW MOUNTING

Cut out template

Apply to baseboard edge

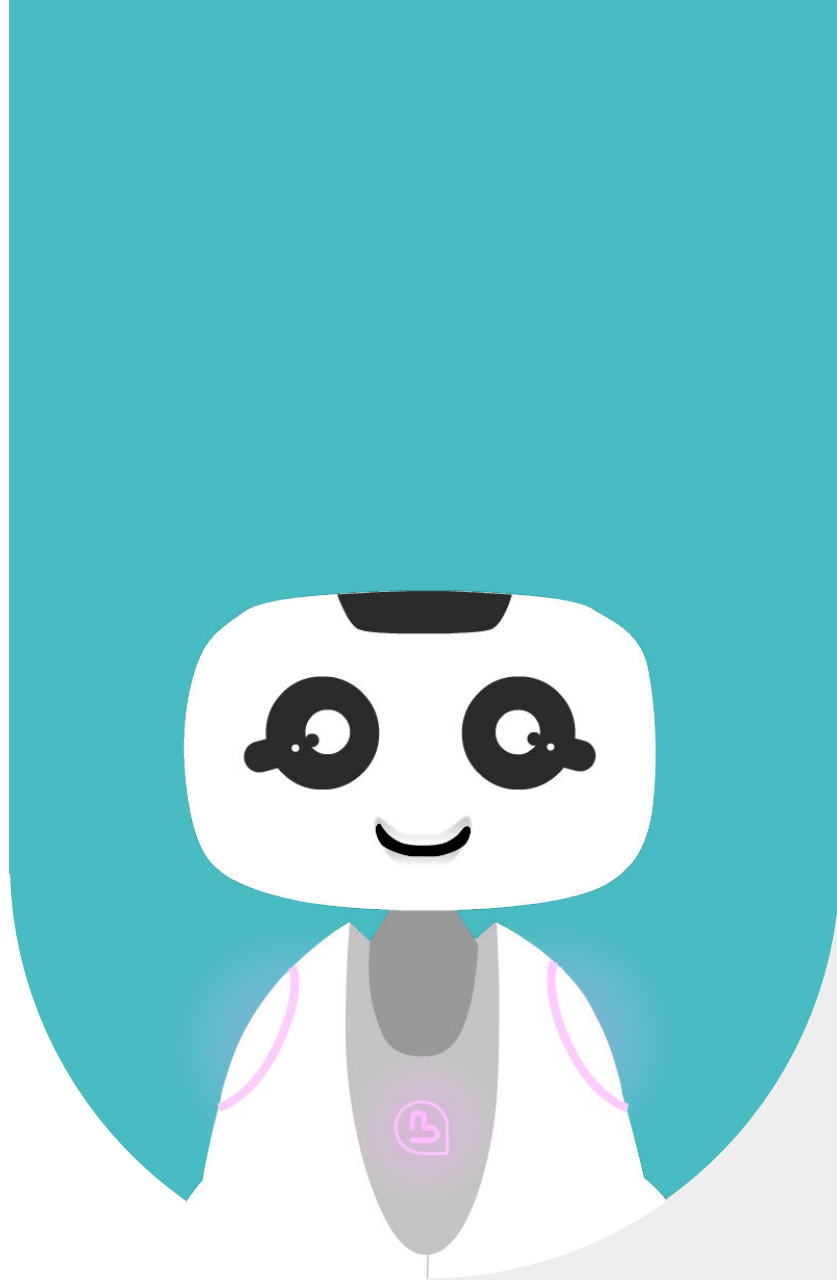




4 - STATION CONNECTION

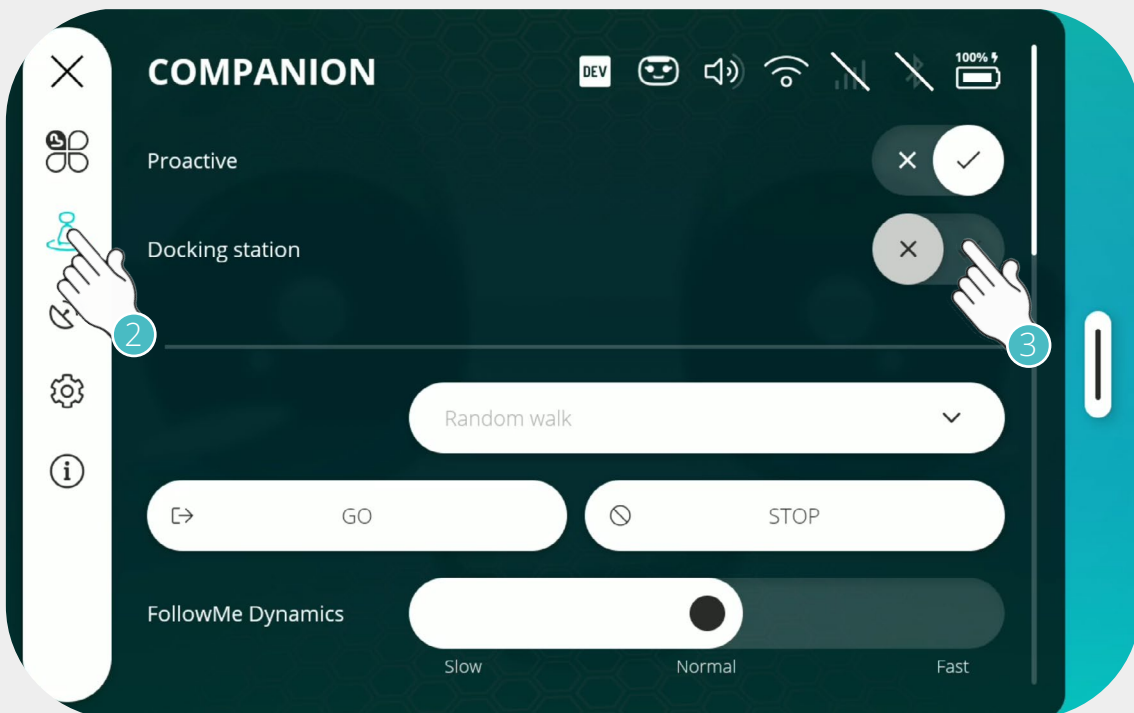
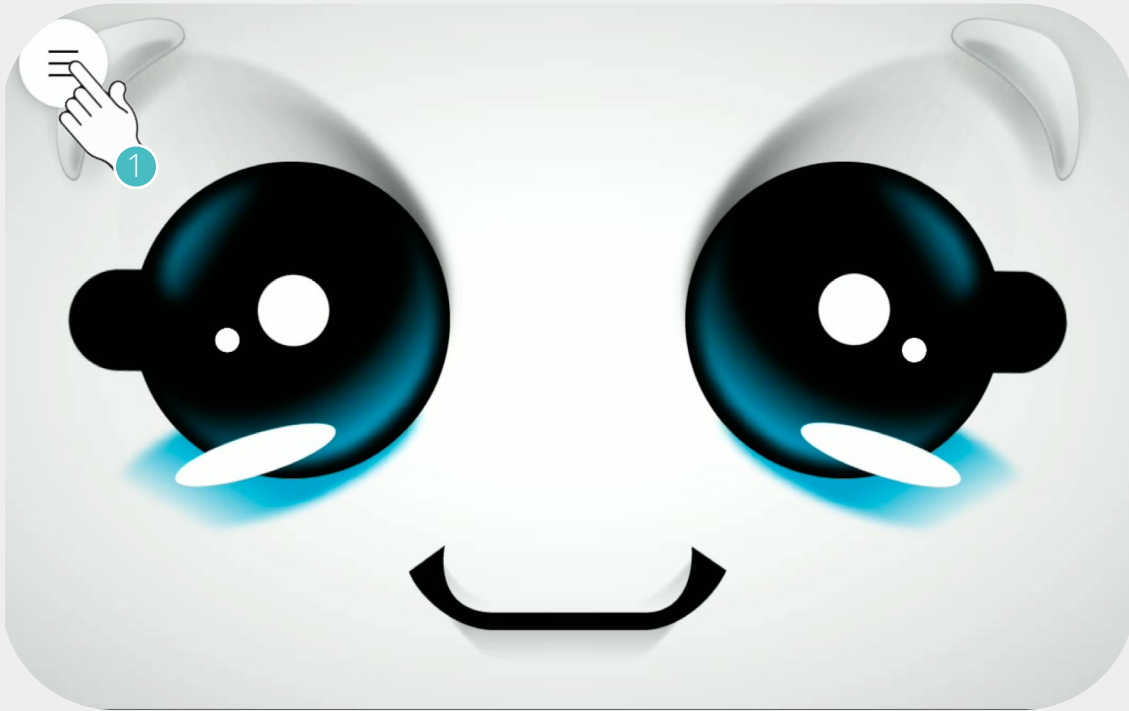
Connect the station to power supply supplied with the robot

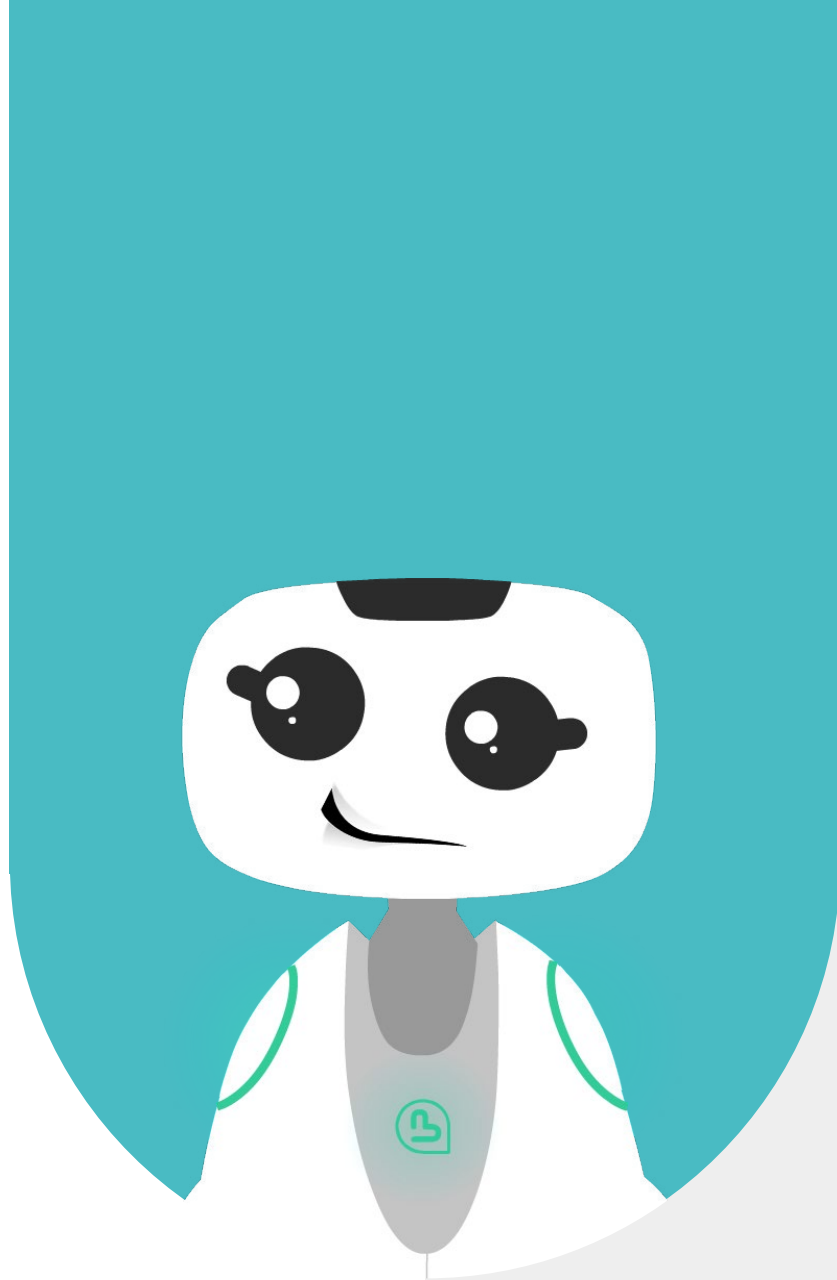




5 - BUDDY MENU CONFIGURATION

- 1 - Access the Buddy menu
- 2 - Go to the «Companion» tab
- 3 - Activate the «Base station» button





6 - RELOADING PROCESS

6.1 - TRIGGERING THE RELOADING PROCESS

1 - Battery level down to 20%

The robot automatically launches the search mission for the recharge

2 - The user says one of the following voice commands :

«GO TO THE DOCKING STATION»,
«GO TO THE CHARGING STATION»,
«GO (RECHARGE | RECHARGING)»,
«GO (CHARGE | CHARGING)»,
«GO HOME»,
«GO TO YOUR HOUSE»

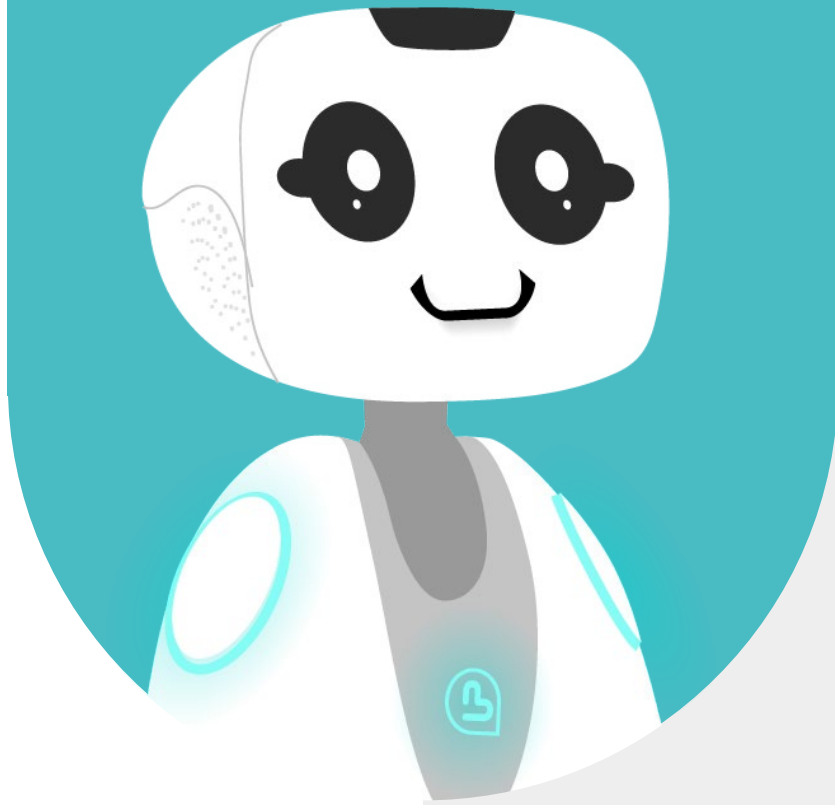
6.2 - EXIT FROM RECHARGING PROCESS

1 - Battery level reaches 100%. The robot automatically exits the Docking station.

2 - If battery level is less than 100% Give the Voice Command « Stop charging »

6.2 - WARNING

Charging station markers must remain always visible. The robot must be less than 4m from the Docking, with unobstructed access. The area between the robot and the recharging station must be clear of obstacles, chair legs and table legs. The parking area must be greater (height and width) than the robot dimension.



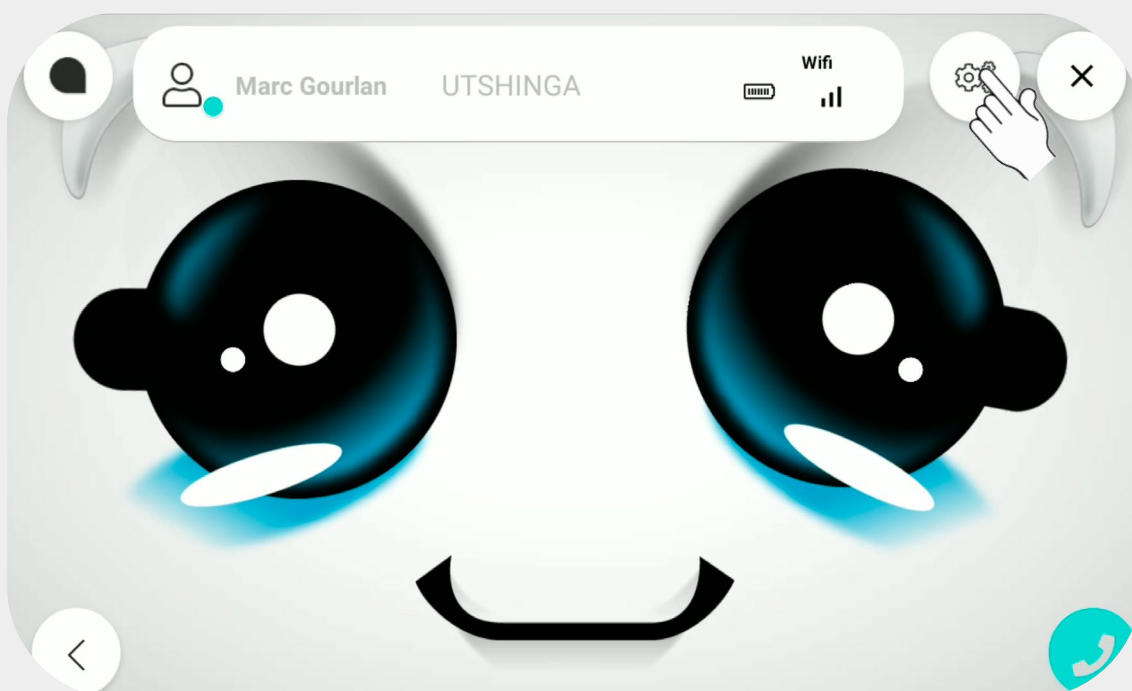
7 - DOCK THE ROBOT FROM MYBUDDYAPP

7.1 - ON TELEBUDDY

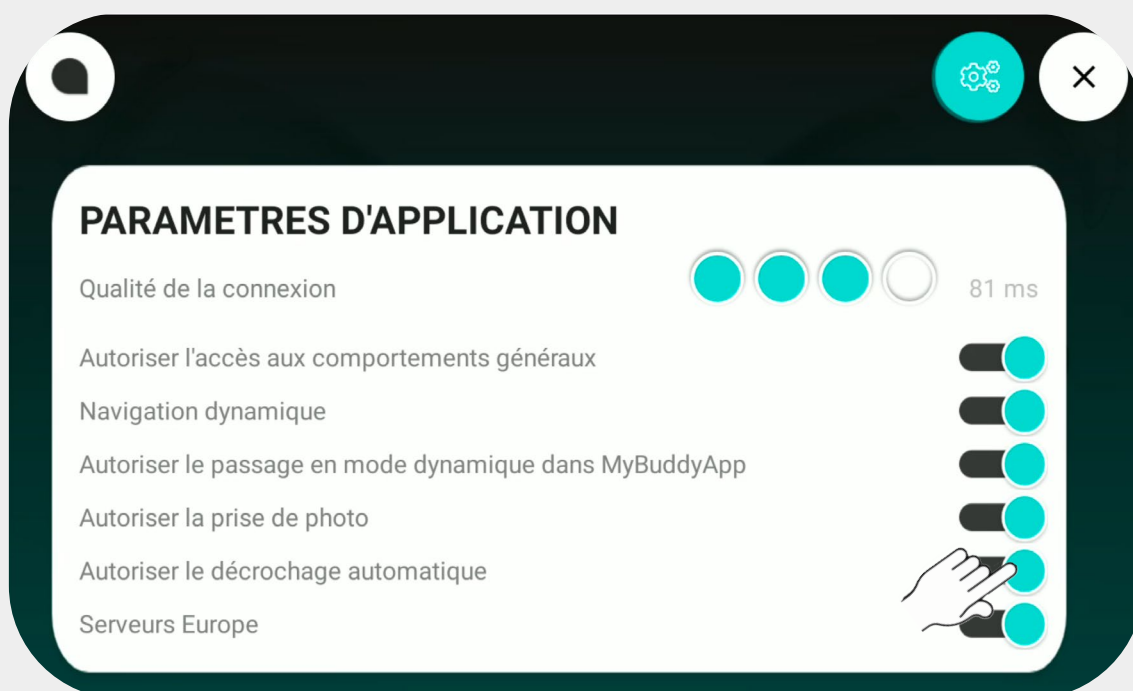
Double-check the setting:

Companion Menu -> Charging Station -> Enabled

Launch TeleBuddy (V1.2.18 or higher)



Enable automatic unhooking

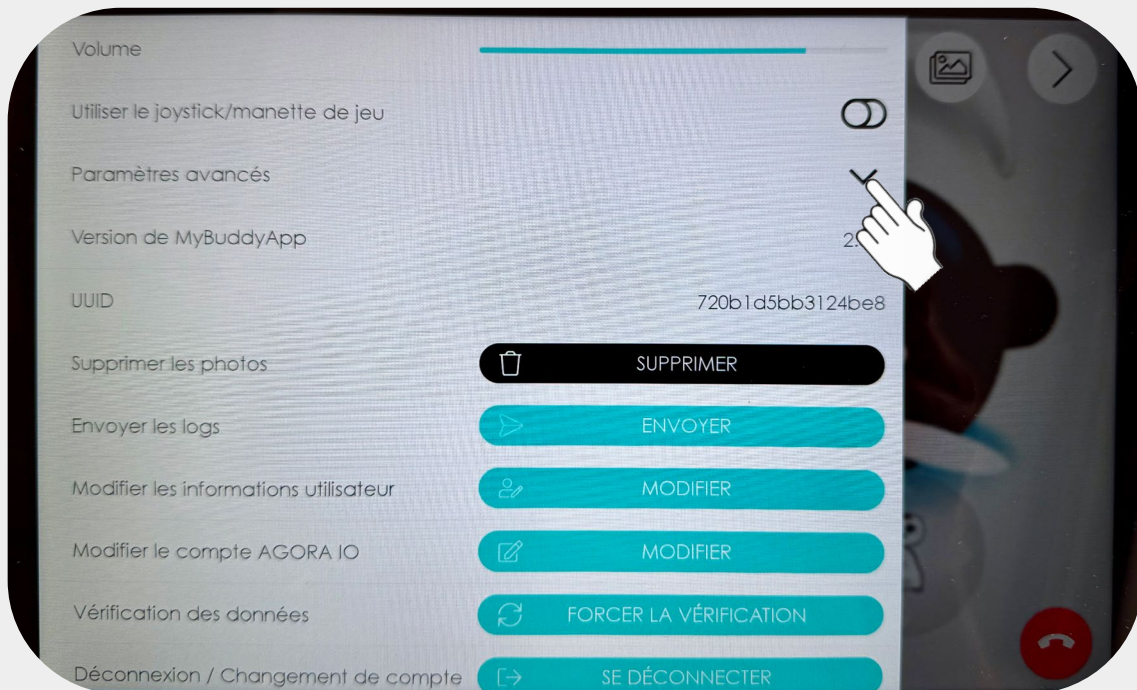


7.2 - ON MYBUDDYAPP

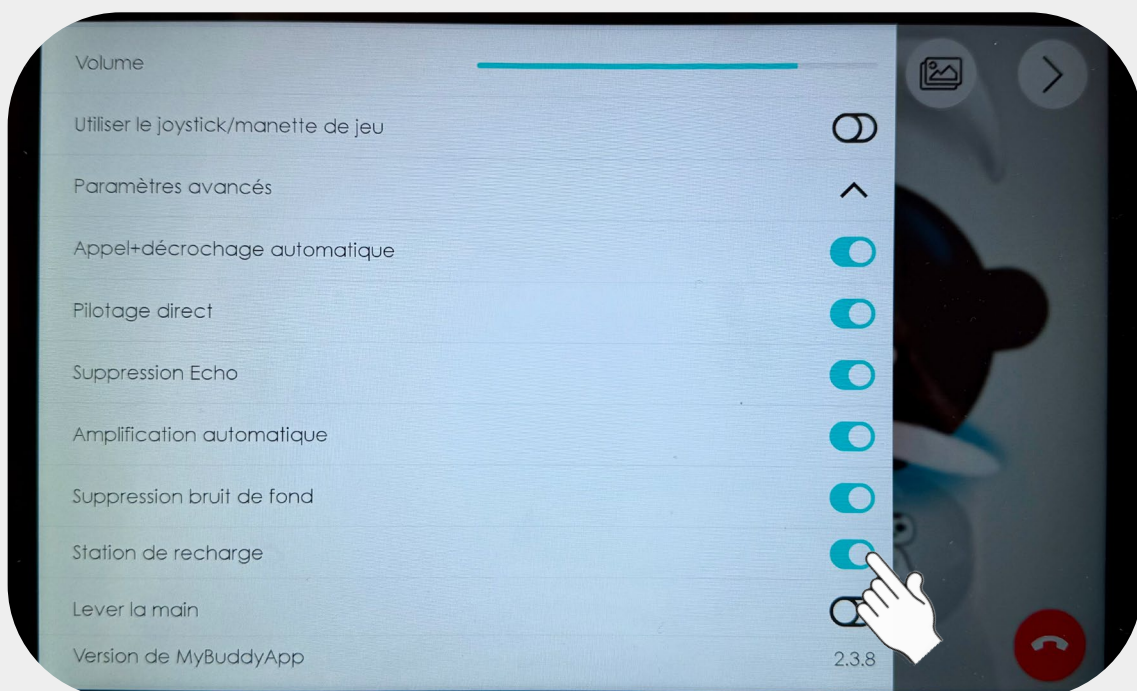
Download MyBuddyApp

Launch MyBuddyApp on your Tablet (V2.3.8 or higher)

Go to the "Settings" menu and select "Advanced settings"

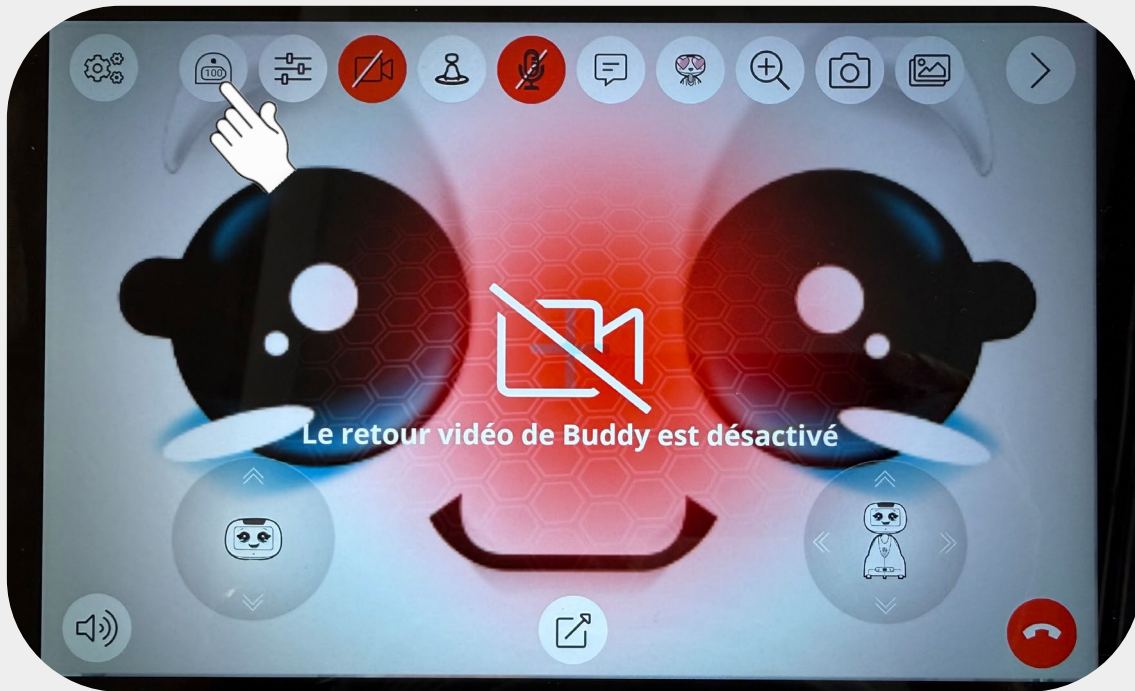


Activate "Charging Station"

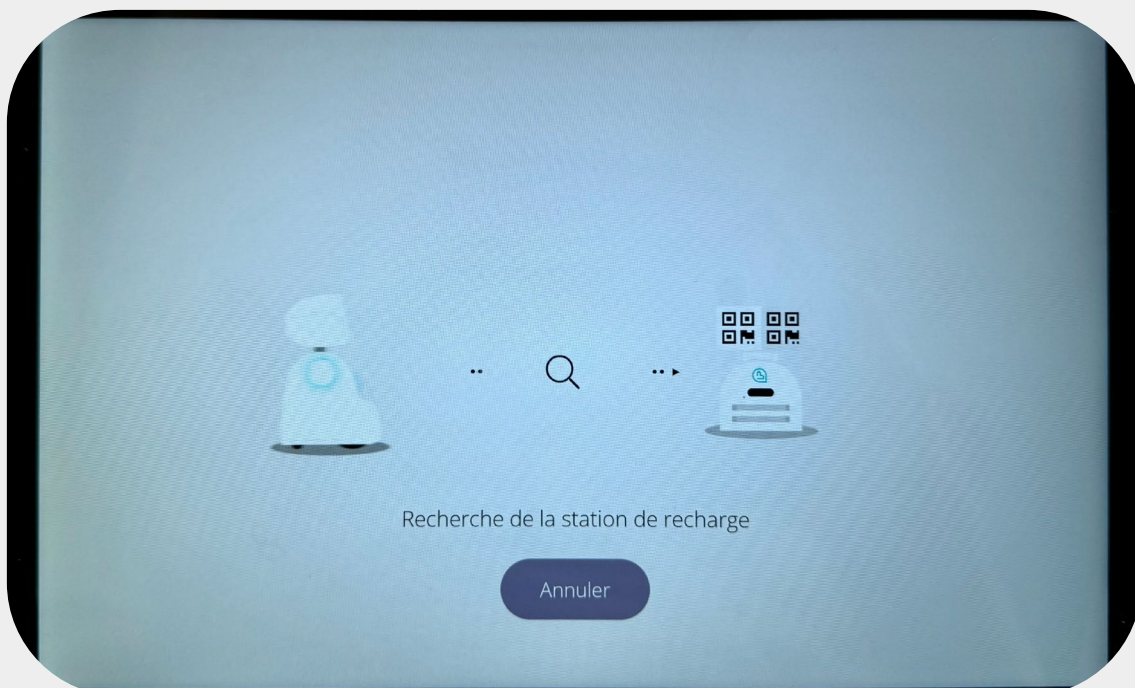


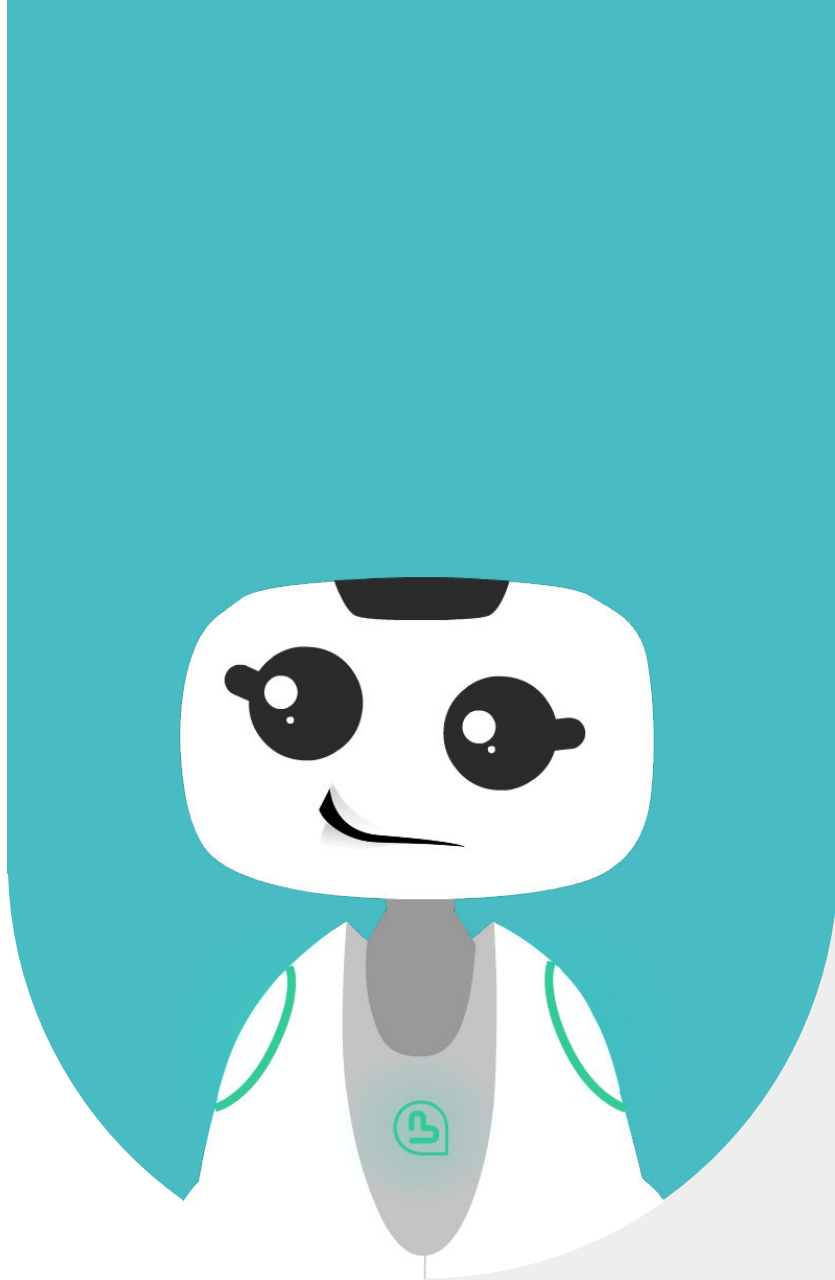
Drive the robot to position it in front of the Charging Station.
You must be able to see at least one of the Docking Station's QR codes.

Press the "Docking" button in the MyBuddyApp Menu



This screen appears during the parking process.
Once completed, Buddy's video will be reactivated.





7 - CONTACT



7.1 - CONTACT INFORMATION

If you wish to contact us for further information, please refer to the following address:

SUPPORT
service-client@buddytherobot.com

GENERAL INFORMATION
info@bluefrogrobotics.com